



CORINTHIA

BUDAPEST

Széchenyi Chain Bridge



St. Stephen's Basilica



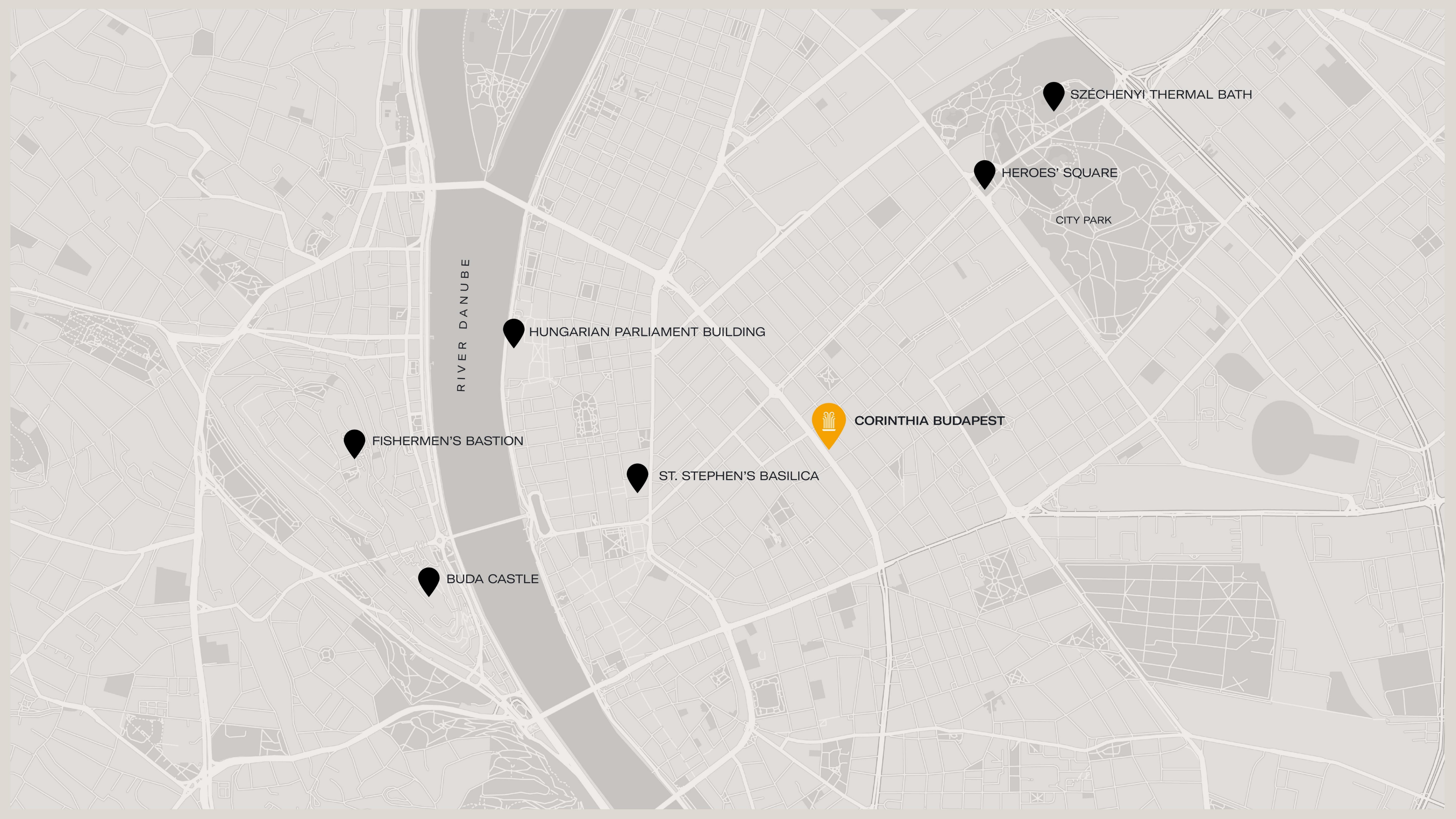
Hungarian Parliament



Fishermen's Bastion



DESTINATION HIGHLIGHTS



RIVER DANUBE

FISHERMEN'S BASTION

BUDA CASTLE

HUNGARIAN PARLIAMENT BUILDING

ST. STEPHEN'S BASILICA

CORINTHIA BUDAPEST

HEROES' SQUARE

SZÉCHENYI THERMAL BATH

CITY PARK

Discover the beauty of
GRAND BUDAPEST





In the heart of Budapest since 1896

- The official opening of the Grand Hotel Royal (the predecessor of Corinthia Budapest) dates to 1896, during the vibrant era of the Millennium Exhibition in Budapest.
- In the city of spas, the Royal Spa has long been also an outstanding landmark. Its origin dates to an art deco heyday in 1886.
- Featuring a captivating fusion of modern amenities and timeless elegance, the establishment boasted a palm garden, confectionery shop, cellar bar, and grocery store, alongside additional conveniences such as a bank, post office, and hair salon, to name just a few.
- During the Second World War, it served a dual purpose as both an office building and a hotel.
- When Corinthia re-opened the hotel in 2003, it followed an extensive €100 million renovation, undertaken with great care and dedication, where preserving its elegance was of paramount importance.
- The hotel today is a monument to modern luxury, with a tasteful respect for the past evident round every corner.



ACCOMMODATION

382
ROOMS

31
SUITES

25
SERVICED
APARTMENTS



CORINTHIA

BUDAPEST





SUPERIOR ROOM





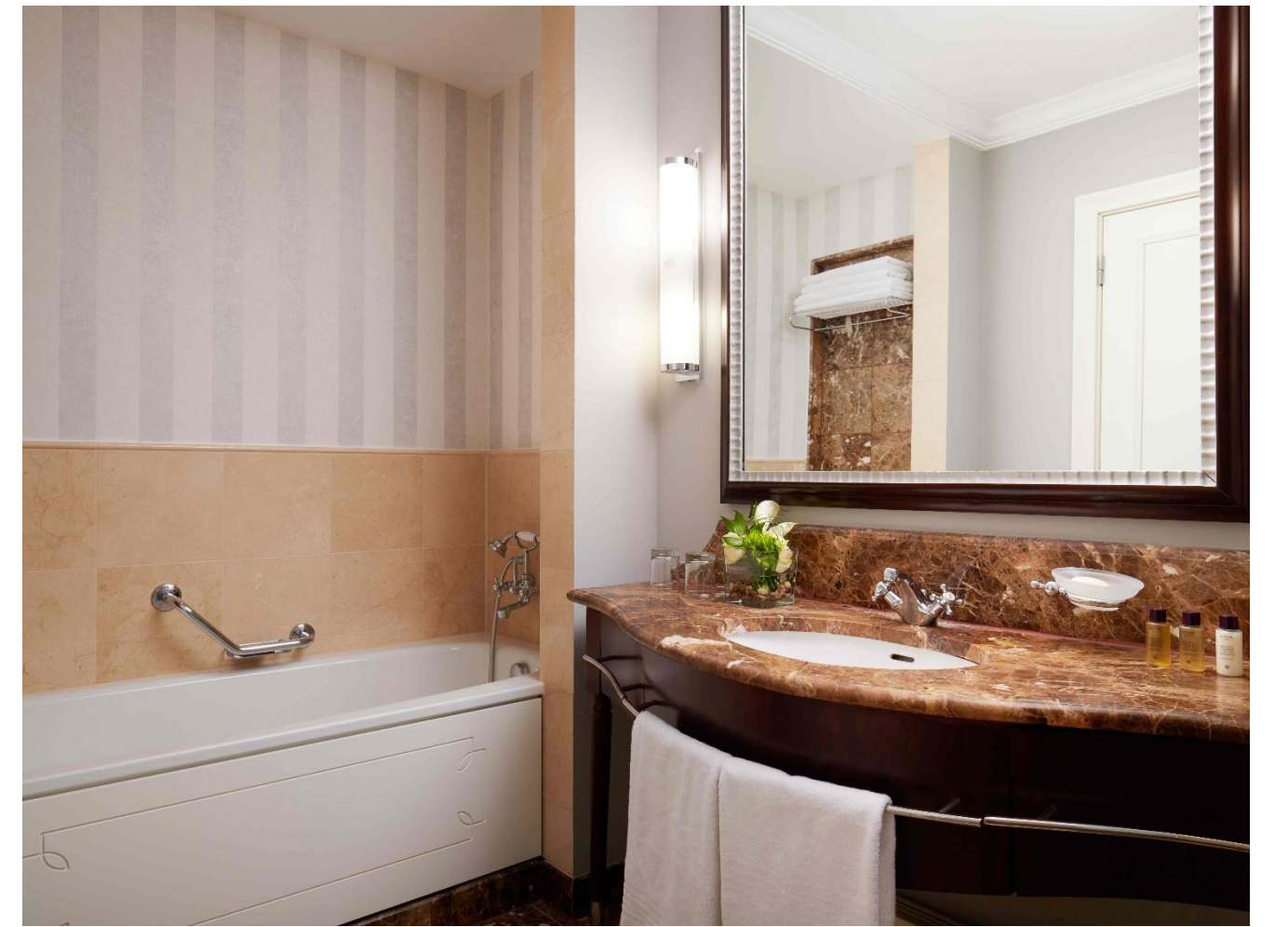
DELUXE ROOM





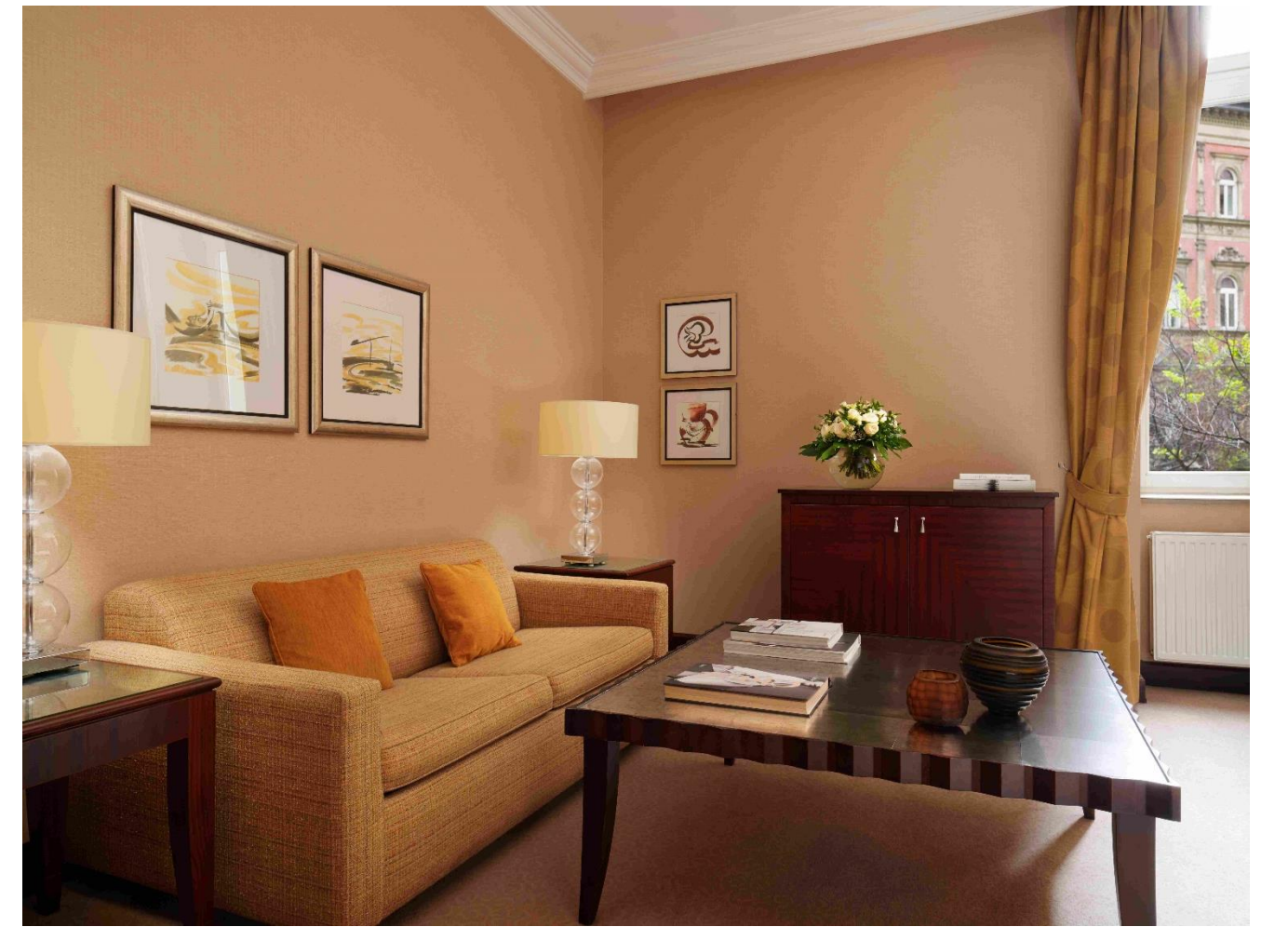
EXECUTIVE ROOM





JUNIOR SUITE





DELUXE SUITE





EXECUTIVE SUITE





SIGNATURE SUITE





PRESIDENTIAL SUITE





BRASSERIE AND ATRIUM





LE BAR





EXECUTIVE LOUNGE



Events & Celebrations

GRAND BALLROOM
430M² / 4,629FT²
CAPACITY: UP TO 500

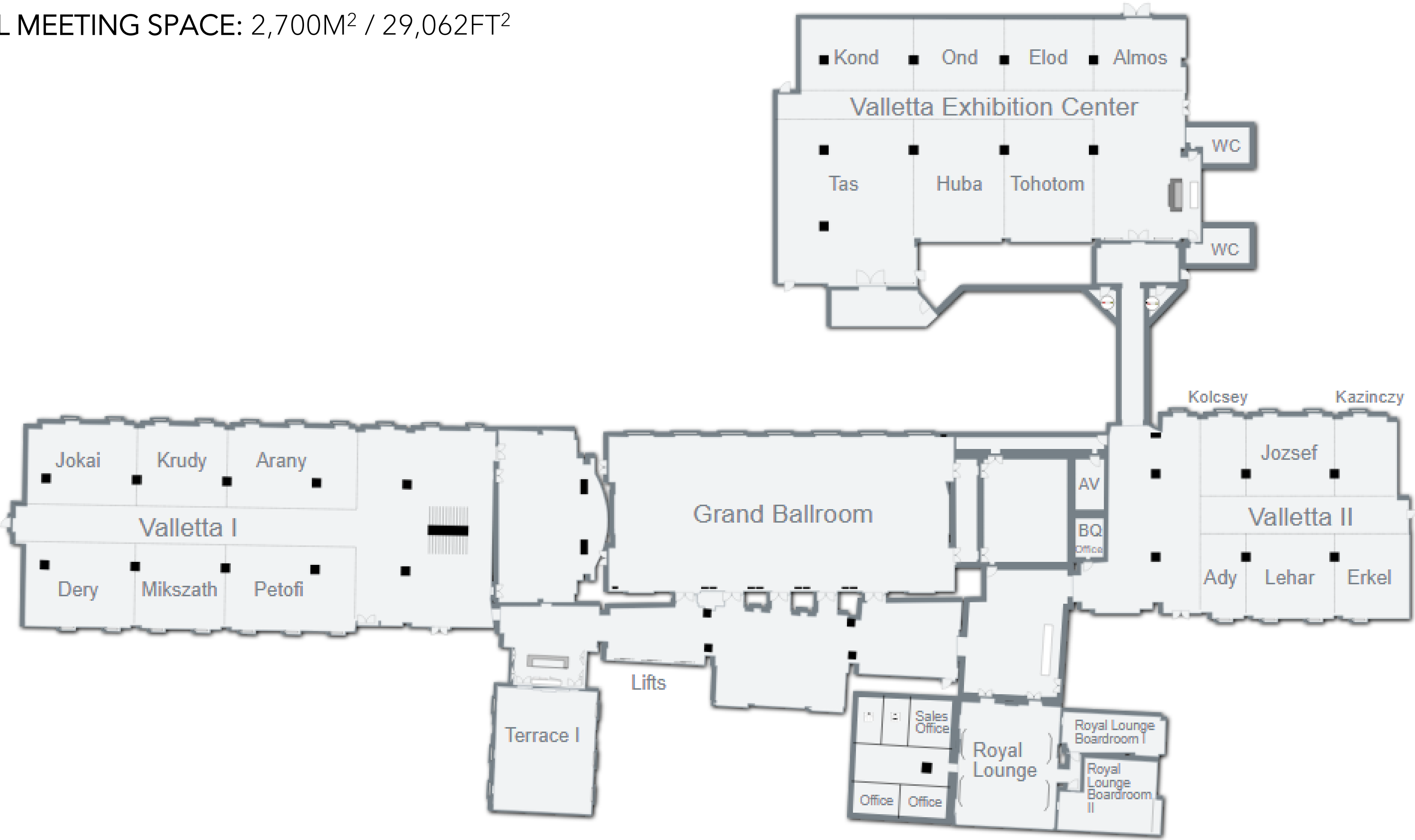
VALLETTA CONFERENCE CENTRE I
540M² / 5,813FT²
CAPACITY: UP TO 500

VALLETTA CONFERENCE CENTRE II
330M² / 3,552FT²
CAPACITY: UP TO 250

VALLETTA EXHIBITION CENTRE
740M² / 7,965FT²
CAPACITY: UP TO 650



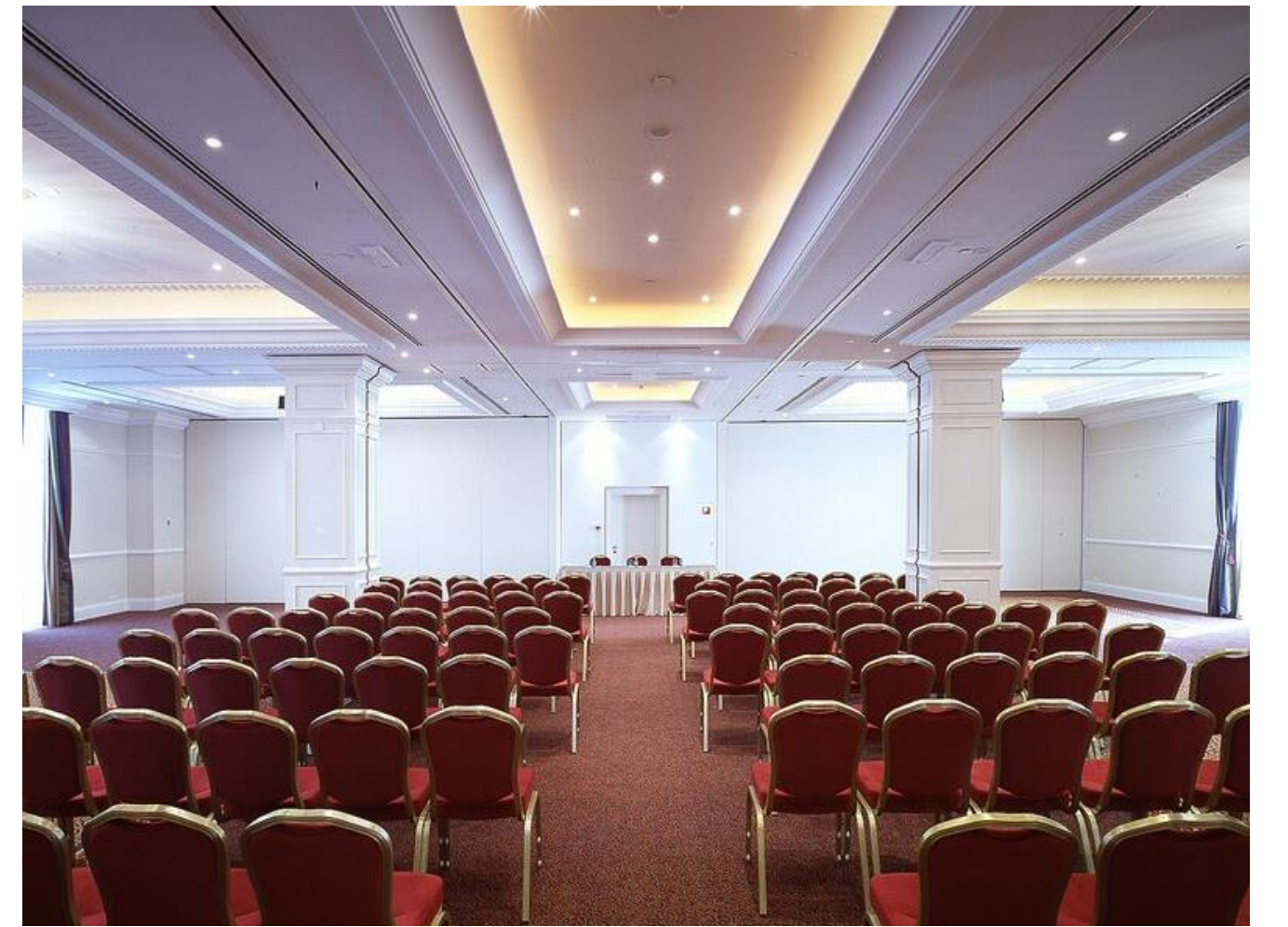
TOTAL MEETING SPACE: 2,700M² / 29,062FT²





GRAND BALLROOM





VALLETTA CONFERENCE CENTER I.-II.





VALLETTA EXHIBITION CENTER





ROYAL BOARDROOM - ROYAL LOUNGE





THE ROYAL SPA HAS LONG BEEN AN OUTSTANDING LANDMARK. PROVIDING VITALITY, TRANQUILLITY AND WELLBEING WITH A 15-METRE SWIMMING POOL, RELAXATION AREAS, SAUNAS, A STEAM BATH, AND JACUZZI.



ROYAL SPA





Thank you!